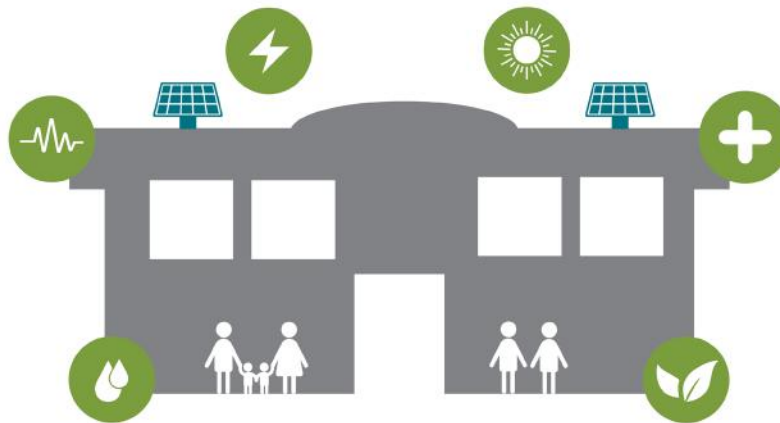


# Fulton County Community Resilience Hub



In order to improve the climate resilience of local residents, Fulton County Government and Southface Institute are partnering to establish a community resilience hub at one of the County's community-serving facilities. The community resilience hub will advance resilience during both emergency situations and everyday operations.

## WHAT IS A COMMUNITY RESILIENCE HUB?

Resilience hubs are community facilities that provide an additional layer of climate resilience for residents before, during and after extreme weather events and emergencies. These facilities meet the resilience needs of the community in many ways and often incorporate technologies like solar-plus-storage and rainwater harvesting to ensure they can continue operating even when the power is out.

## WHAT IS CLIMATE RESILIENCE?

Climate resilience refers to the ability of residents and communities to anticipate, prepare for and adapt to climate change and extreme weather events.

## DESIRED OUTCOME

Over the next two years, Fulton County Government and Southface Institute will work with local residents to identify an ideal site and establish a community resilience hub at one of the county's community-serving facilities. The ultimate goal is to provide the surrounding community with the support needed in case of extreme weather events and natural disasters and to educate residents about climate resilience in their daily lives.

## WHY FULTON COUNTY?

In the past decade, weather-related power outages and transportation crises have become a major problem for the state and its communities, though not everyone experiences these emergencies in the same way. Some communities are inequitably vulnerable to the shocks and stressors of climate change. As the most populous county in Georgia, Fulton County is home to over a million residents that all experience the impacts of climate change and extreme weather, but many of them are without the necessary resources to compensate for the interruptions caused by such events.

*Some Fulton County communities are inequitably affected by extreme weather events like hurricanes and tornadoes.*



Contact the project leads below for more information:

**Kenneth Darisaw**  
Manager of Energy and Sustainability | Fulton County Government  
Kenneth.Darisaw@fultoncountyga.gov

**Alex Trachtenberg**  
Senior Project Manager | Southface Institute  
atrachtenberg@southface.org



# Fulton County Community Resilience Hub

## PROJECT TIMELINE

### Year 1: Community Engagement and Building Assessments

- Southface Institute, Fulton County and the community will identify the optimal resilience hub site from four candidate facilities.
- Community stakeholders will identify the types of resilient technologies and practices that are most needed locally.
- Residents will be educated about resilient practices and technologies at community engagement sessions.
- Building science professionals will perform technical analysis of candidate facilities.

### Year 2: Community Resilience Hub Implementation

- Based on the recommendations of the community and building assessments, Southface Institute and Fulton County will work to establish a community resilience hub at the selected facility.
- Building science professionals will design and install resilient technologies that could include solar-plus-storage, rain water harvesting and emergency communications.
- Stakeholders will establish operational plans and educational programming around climate resilience.

## CANDIDATE SITES

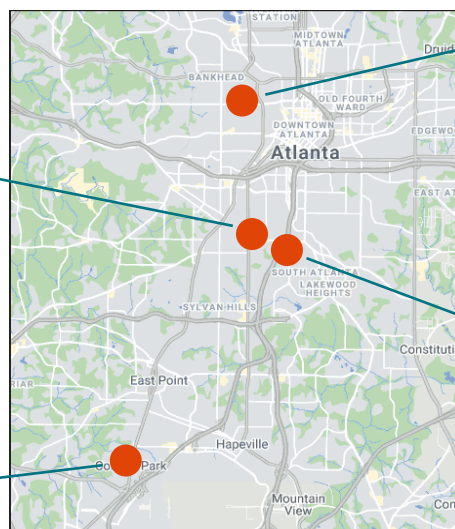
Four candidate sites have initially been selected from the County's portfolio of community-serving facilities, based on a high-level analysis of community data and solar-plus-storage feasibility. Community engagement and educational programming will take place at all four sites, with one being selected to eventually become a community resilience hub.



Metropolitan Branch Library



College Park Regional Health Center



Neighborhood Union Health Center



Louise Watley Library at Southeast

Contact the project leads below for more information:

**Kenneth Darisaw**  
Manager of Energy and Sustainability | Fulton County Government  
Kenneth.Darisaw@fultoncountyga.gov

**Alex Trachtenberg**  
Senior Project Manager | Southface Institute  
atrachtenberg@southface.org

